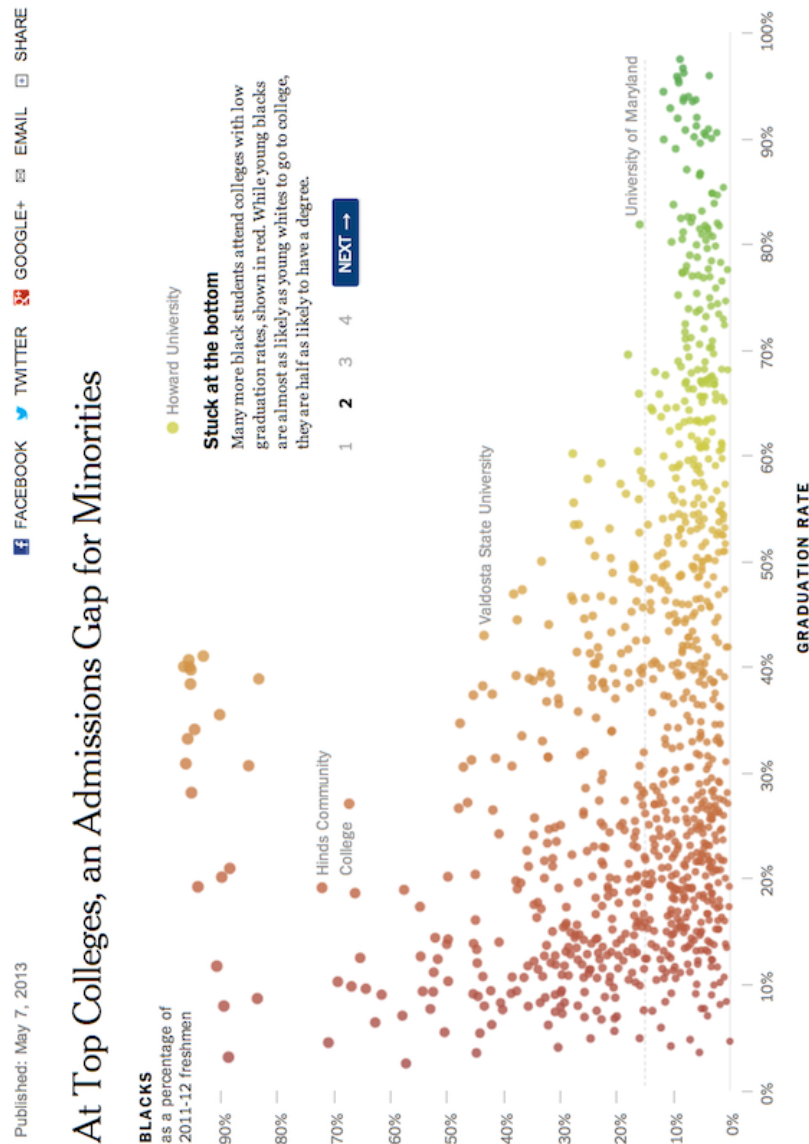


# Eye-Training for Data Graphics

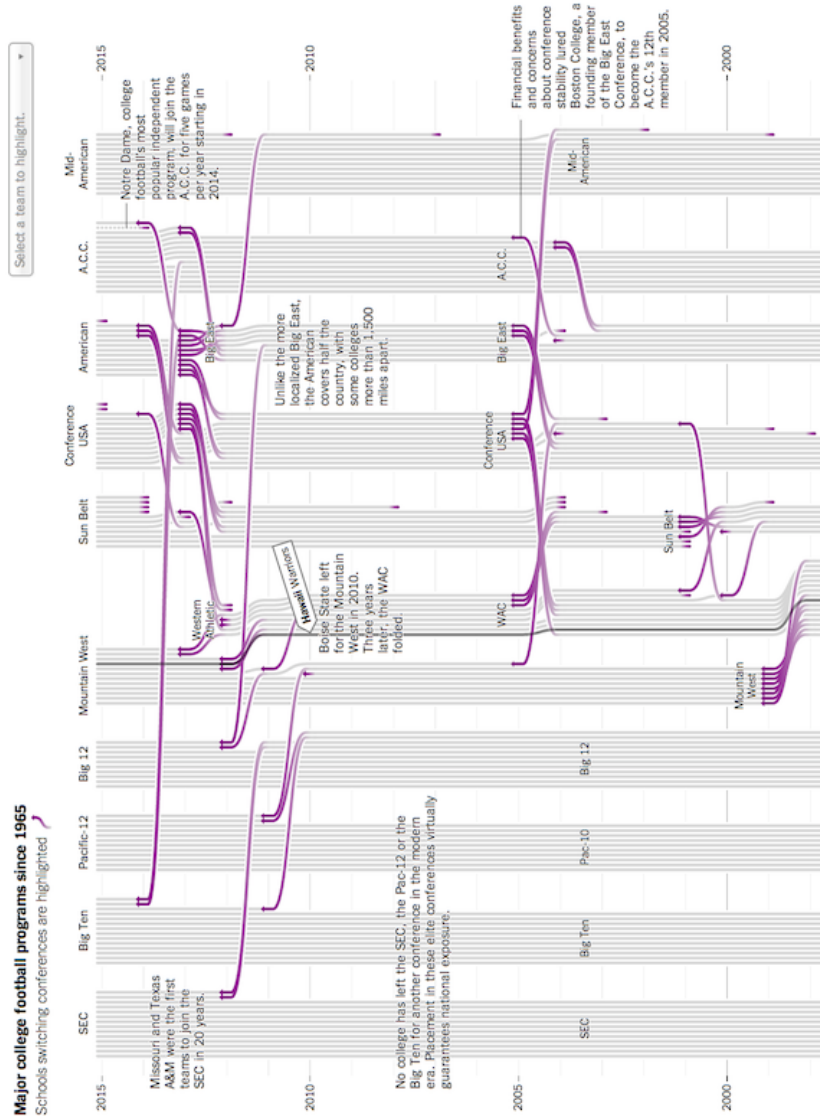
## Admissions gap



1. What variables form the frame?
2. What glyphs (marks/geoms) are used?
3. What are the properties (aesthetics, channels) for those glyphs?
4. Which variables are mapped to which properties?
5. Which variables, if any, are used for faceting (small multiples)?
6. Which scales have a corresponding guide?
7. What would a row of the glyph-ready data used to create this plot look like? (Include variable names and (estimated) values.)
8. Do you think the raw data had a different format? If so, what would a row of the raw data look like?
9. What are the biggest strengths/weakness of this plot?
10. Are there any elements of this plot that don't fit into the "grammar of graphics"?

Source: <https://archive.nytimes.com/www.nytimes.com/interactive/2013/05/07/education/college-admissions-gap.html>

## Football leagues



1. What variables form the frame?
2. What glyphs (marks/geoms) are used?
3. What are the properties (aesthetics, channels) for those glyphs?
4. Which variables are mapped to which properties?
5. Which variables, if any, are used for faceting (small multiples)?
6. Which scales have a corresponding guide?
7. What would a row of the glyph-ready data used to create this plot look like? (Include variable names and (estimated) values.)
8. Do you think the raw data had a different format? If so, what would a row of the raw data look like?
9. What are the biggest strengths/weakness of this plot?
10. Are there any elements of this plot that don't fit into the "grammar of graphics"?

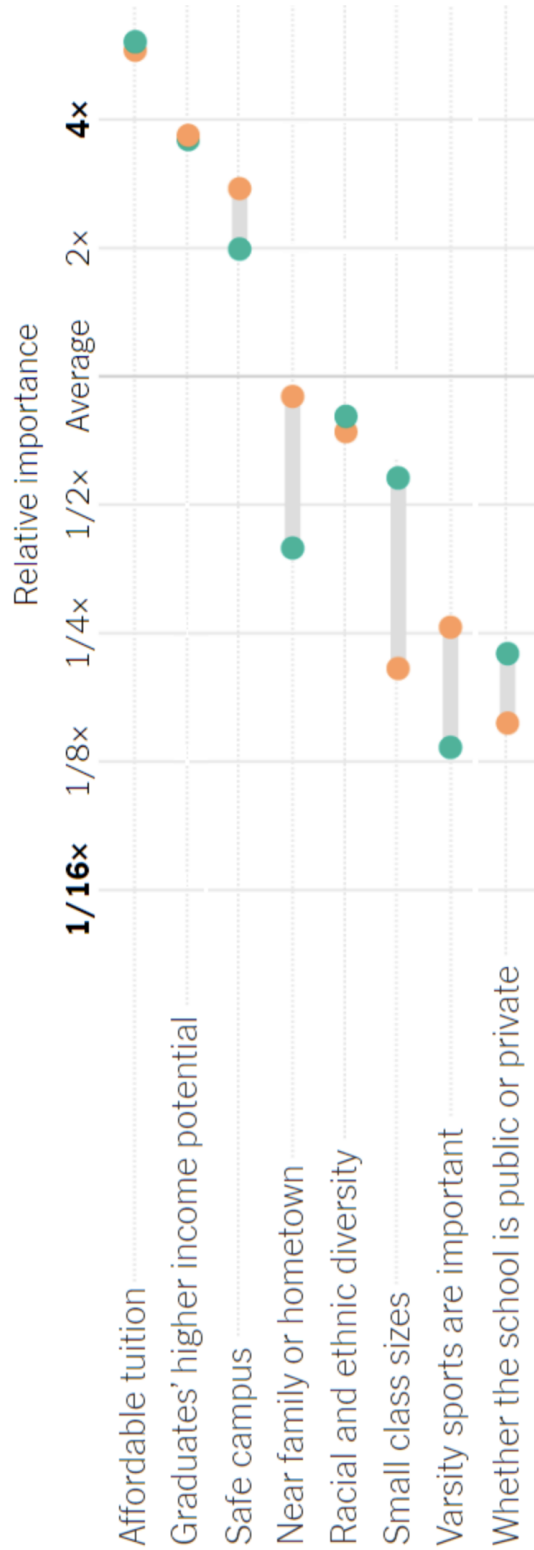
Source: <https://www.nytimes.com/newsgraphics/2013/11/30/football-conferences/index.html>



What matters when choosing a college?

## What matters when choosing a college?

Comparing the priorities of **16- to 19-year-olds** and **recent college graduates**.

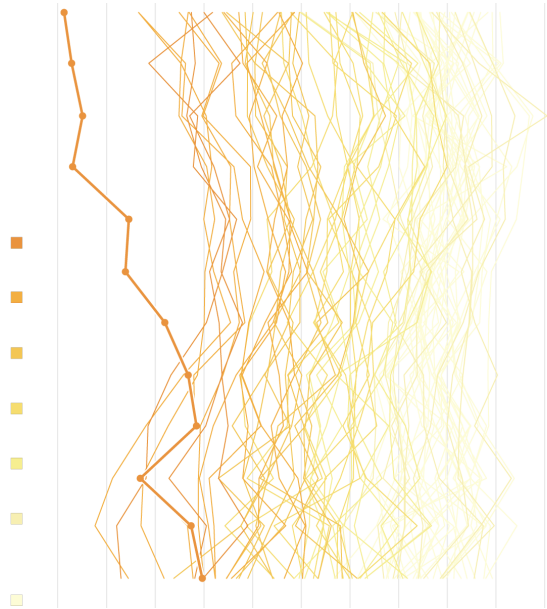


Note: Poll conducted Jan. 17-Feb. 5, 2023. Respondents were limited to 16- to 19-year-olds and 22- to 30-year-olds who were considering attending or had attended college. • Source: Morning Consult.

1. What variables form the frame?
2. What glyphs (marks/geoms) are used?
3. What are the properties (aesthetics, channels) for those glyphs?
4. Which variables are mapped to which properties?
5. Which variables, if any, are used for faceting (small multiples)?
6. Which scales have a corresponding guide?
7. What would a row of the glyph-ready data used to create this plot look like? (Include variable names and (estimated) values.)
8. Do you think the raw data had a different format? If so, what would a row of the raw data look like?
9. What are the biggest strengths/weakness of this plot?
10. Are there any elements of this plot that don't fit into the "grammar of graphics"?

Source: <https://www.nytimes.com/2023/10/26/learning/whats-going-on-in-this-graph-nov-8-2023.html>

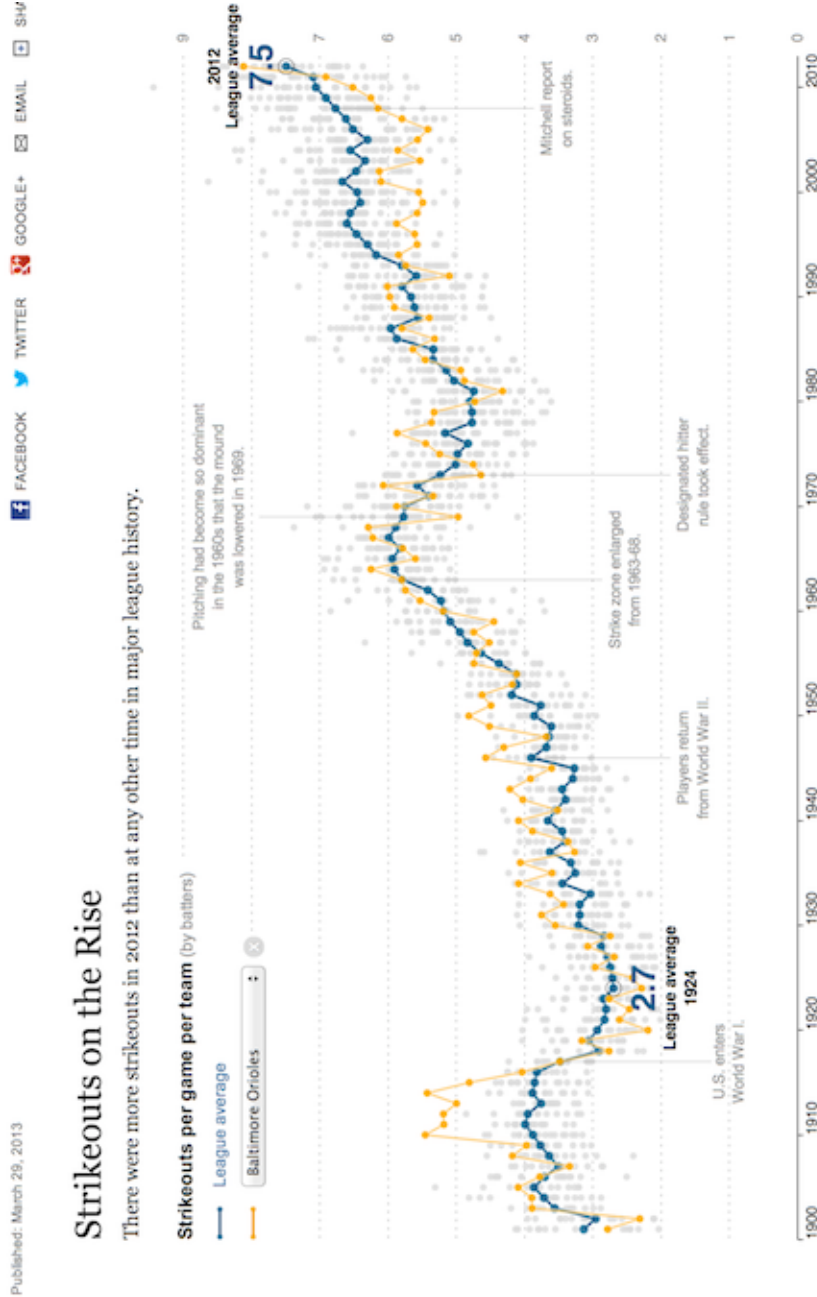
### *Global Warming*



1. What variables form the frame?
2. What glyphs (marks/geoms) are used?
3. What are the properties (aesthetics, channels) for those glyphs?
4. Which variables are mapped to which properties?
5. Which variables, if any, are used for faceting (small multiples)?
6. Which scales have a corresponding guide?
7. What would a row of the glyph-ready data used to create this plot look like? (Include variable names and (estimated) values.)
8. Do you think the raw data had a different format? If so, what would a row of the raw data look like?
9. What are the biggest strengths/weakness of this plot?
10. Are there any elements of this plot that don't fit into the "grammar of graphics"?

Source: <https://www.nytimes.com/2024/01/09/climate/2023-warmest-year-record.html>

## Strikeouts



1. What variables form the frame?
2. What glyphs (marks/geoms) are used?
3. What are the properties (aesthetics, channels) for those glyphs?
4. Which variables are mapped to which properties?
5. Which variables, if any, are used for faceting (small multiples)?
6. Which scales have a corresponding guide?
7. What would a row of the glyph-ready data used to create this plot look like? (Include variable names and (estimated) values.)
8. Do you think the raw data had a different format? If so, what would a row of the raw data look like?
9. What are the biggest strengths/weakness of this plot?
10. Are there any elements of this plot that don't fit into the "grammar of graphics"?

Source: <https://rethinkingvis.com/visualizations/80>

## Recession

Published: October 9, 2013

FACEBOOK TWITTER GOOGLE+ EMAIL SHARE

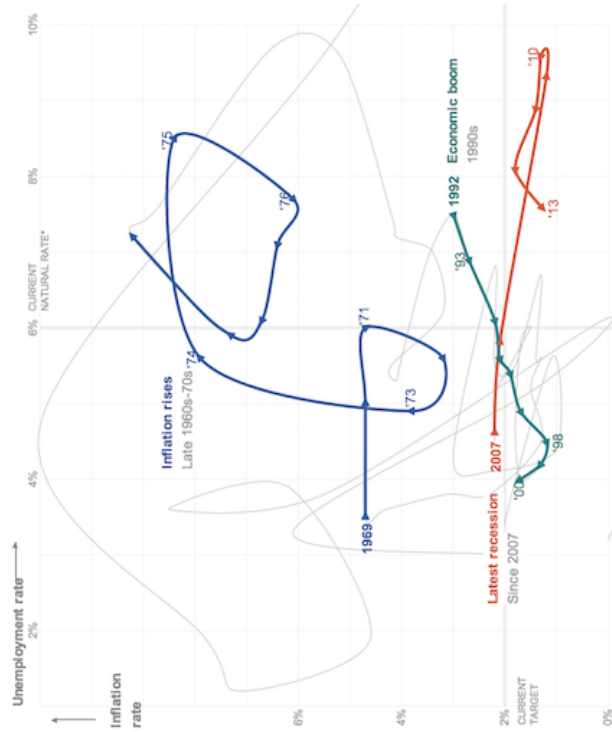
## Janet L. Yellen, on the Economy's Twists and Turns

1 2 3 4 5 6 7  
NEXT >

### Inflation and unemployment

The Federal Reserve is said to have a "dual mandate": keeping inflation in check and the unemployment rate low. These measures, which tend to change cyclically and in concert with each other, are charted for every year since the Great Depression.

In speeches and in meetings, Ms. Yellen, the nominee for the next Fed leader, has commented on the Fed's actions during significant periods, providing a window into her views and priorities.



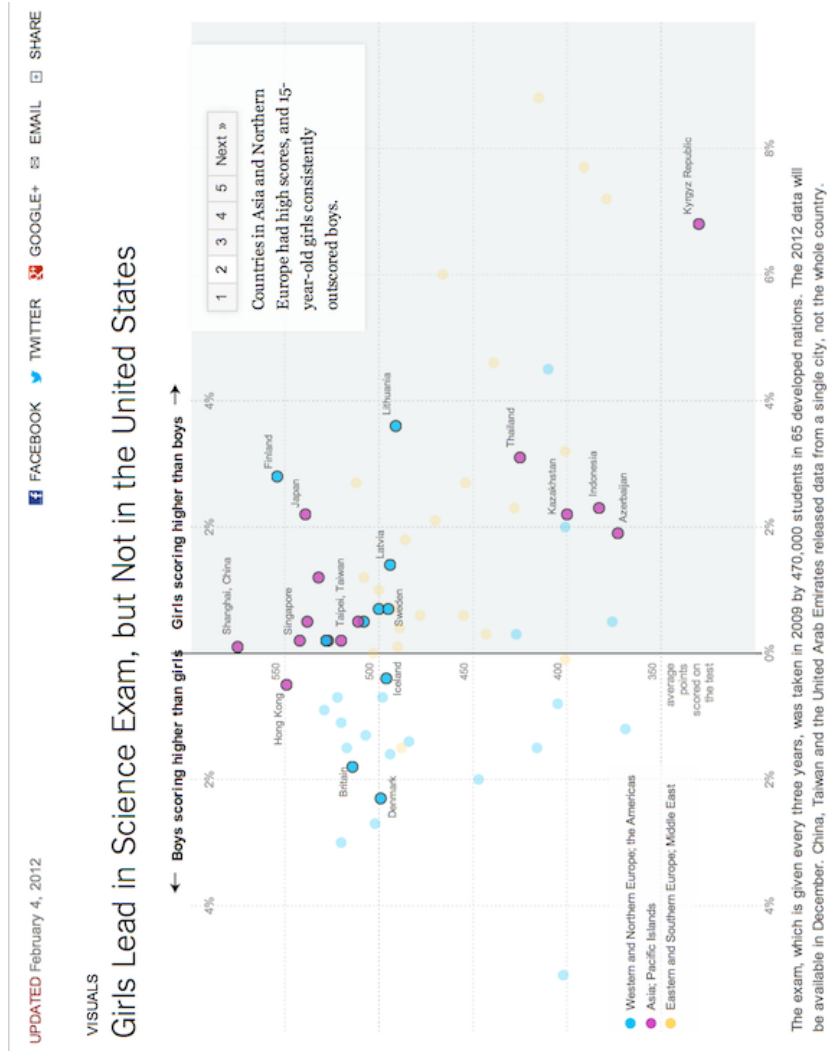
\*The natural rate of unemployment is defined as the lowest sustainable level of unemployment over the long term. If the rate is pushed any lower than the natural level, wages and prices would rise.

By TOM GIRATIKANON and ALICIA PARLAPIANO

1. What variables form the frame?
2. What glyphs (marks/geoms) are used?
3. What are the properties (aesthetics, channels) for those glyphs?
4. Which variables are mapped to which properties?
5. Which variables, if any, are used for faceting (small multiples)?
6. Which scales have a corresponding guide?
7. What would a row of the glyph-ready data used to create this plot look like? (Include variable names and (estimated) values.)
8. Do you think the raw data had a different format? If so, what would a row of the raw data look like?
9. What are the biggest strengths/weakness of this plot?
10. Are there any elements of this plot that don't fit into the "grammar of graphics"?

Source: <https://archive.nytimes.com/www.nytimes.com/interactive/2013/10/09/us/yellen-fed-chart.html>

## Science Scores



1. What variables form the frame?
2. What glyphs (marks/geoms) are used?
3. What are the properties (aesthetics, channels) for those glyphs?
4. Which variables are mapped to which properties?
5. Which variables, if any, are used for faceting (small multiples)?
6. Which scales have a corresponding guide?
7. What would a row of the glyph-ready data used to create this plot look like? (Include variable names and (estimated) values.)
8. Do you think the raw data had a different format? If so, what would a row of the raw data look like?
9. What are the biggest strengths/weakness of this plot?
10. Are there any elements of this plot that don't fit into the "grammar of graphics"?

Source: <https://archive.nytimes.com/www.nytimes.com/interactive/2013/02/04/science/girls-lead-in-science-exam-but-not-in-the-united-states.html>



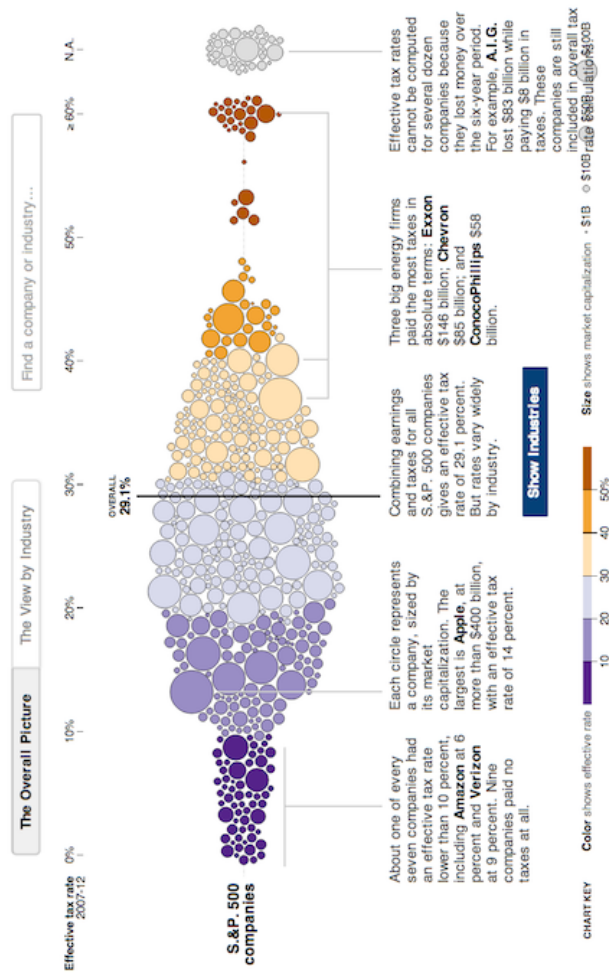
## Corporate Taxes

Published: May 25, 2013

FACEBOOK TWITTER GOOGLE+ EMAIL SH

### Across U.S. Companies, Tax Rates Vary Greatly

Last week, in a Congressional hearing, Apple got grilled for its low-tax strategy. But not every business can copy that approach. Here is a look at what S&P 500 companies paid in corporate income taxes — federal, state, local and foreign — from 2007 to 2012, according to S&P Capital IQ. [Related Article »](#)



1. What variables form the frame?
2. What glyphs (marks/geoms) are used?
3. What are the properties (aesthetics, channels) for those glyphs?
4. Which variables are mapped to which properties?
5. Which variables, if any, are used for faceting (small multiples)?
6. Which scales have a corresponding guide?
7. What would a row of the glyph-ready data used to create this plot look like? (Include variable names and (estimated) values.)
8. Do you think the raw data had a different format? If so, what would a row of the raw data look like?
9. What are the biggest strengths/weakness of this plot?
10. Are there any elements of this plot that don't fit into the "grammar of graphics"?

Source: <https://archive.nytimes.com/www.nytimes.com/interactive/2013/05/25/sunday-review/corporate-taxes.html>

## Political Bar Charts

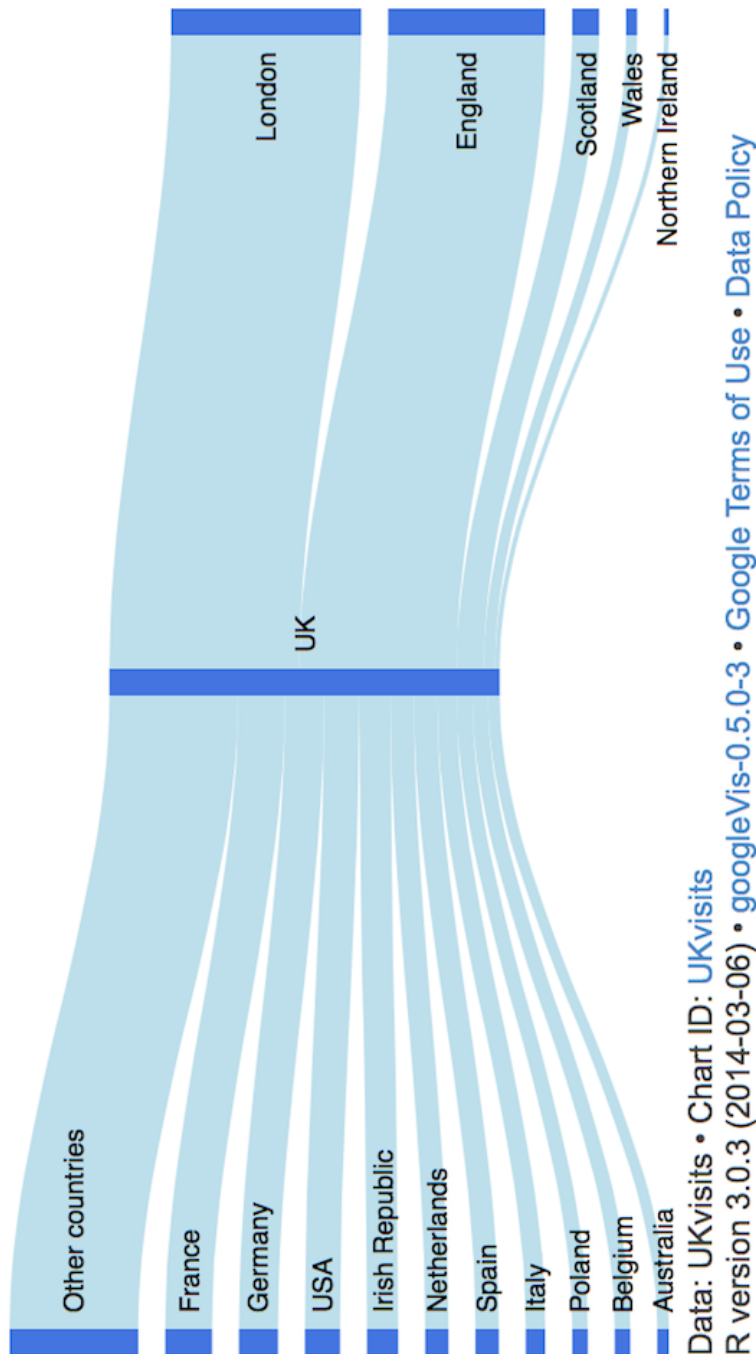


1. What variables form the frame?
2. What glyphs (marks/geoms) are used?
3. What are the properties (aesthetics, channels) for those glyphs?
4. Which variables are mapped to which properties?
5. Which variables, if any, are used for faceting (small multiples)?
6. Which scales have a corresponding guide?
7. What would a row of the glyph-ready data used to create this plot look like? (Include variable names and (estimated) values.)
8. Do you think the raw data had a different format? If so, what would a row of the raw data look like?
9. What are the biggest strengths/weakness of this plot?
10. Are there any elements of this plot that don't fit into the "grammar of graphics"?

Source: <https://www.washingtonpost.com/graphics/politics/2016-election/trump-charts/>

- This is from an article by a Calvin alumnus, John Muyskens

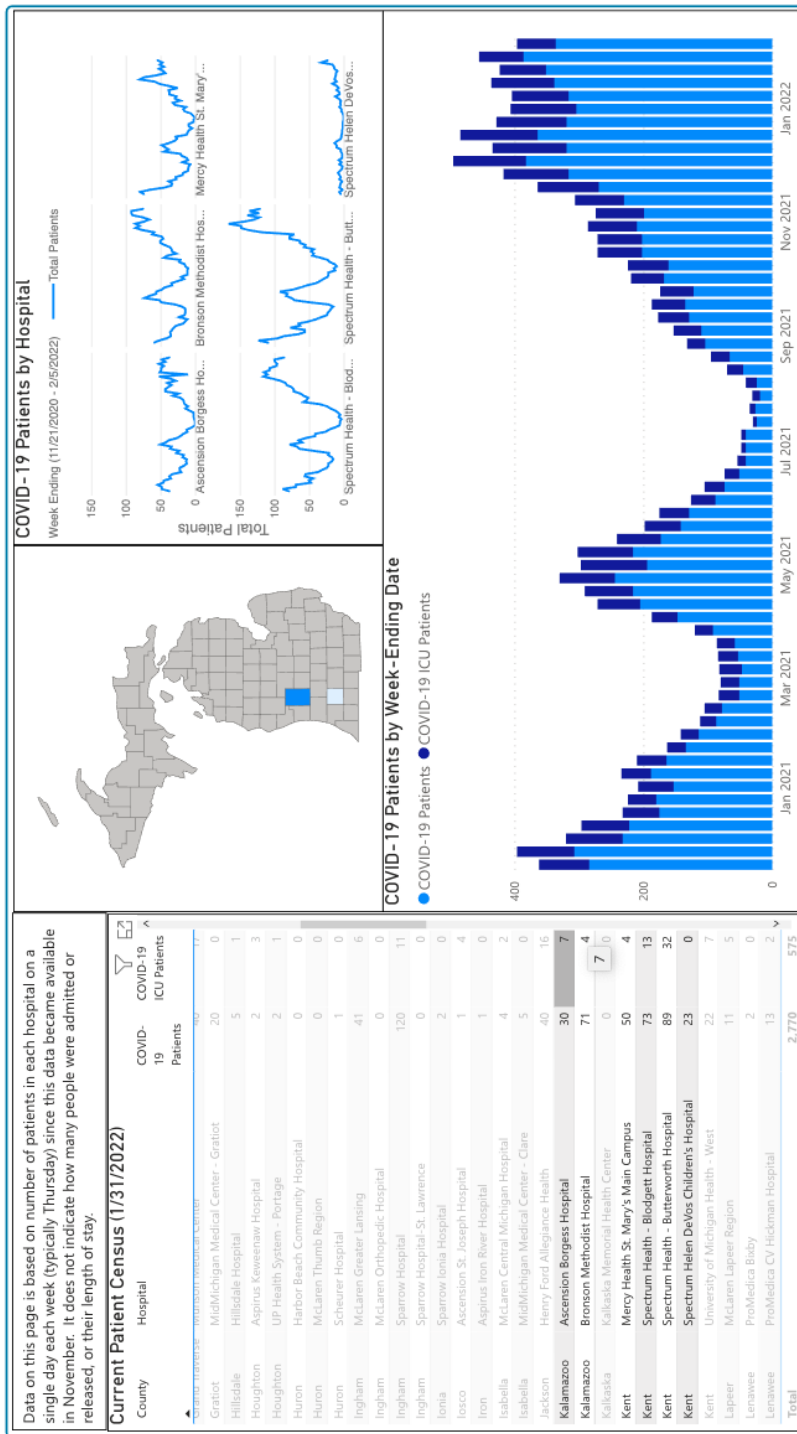


*UK visits*

1. What variables form the frame?
2. What glyphs (marks/geoms) are used?
3. What are the properties (aesthetics, channels) for those glyphs?
4. Which variables are mapped to which properties?
5. Which variables, if any, are used for faceting (small multiples)?
6. Which scales have a corresponding guide?
7. What would a row of the glyph-ready data used to create this plot look like? (Include variable names and (estimated) values.)
8. Do you think the raw data had a different format? If so, what would a row of the raw data look like?
9. What are the biggest strengths/weakness of this plot?
10. Are there any elements of this plot that don't fit into the "grammar of graphics"?

Source: <https://www.magesblog.com/post/2014-03-25-sankey-diagrams-with-googlevis/>

## Kent County COVID dashboard



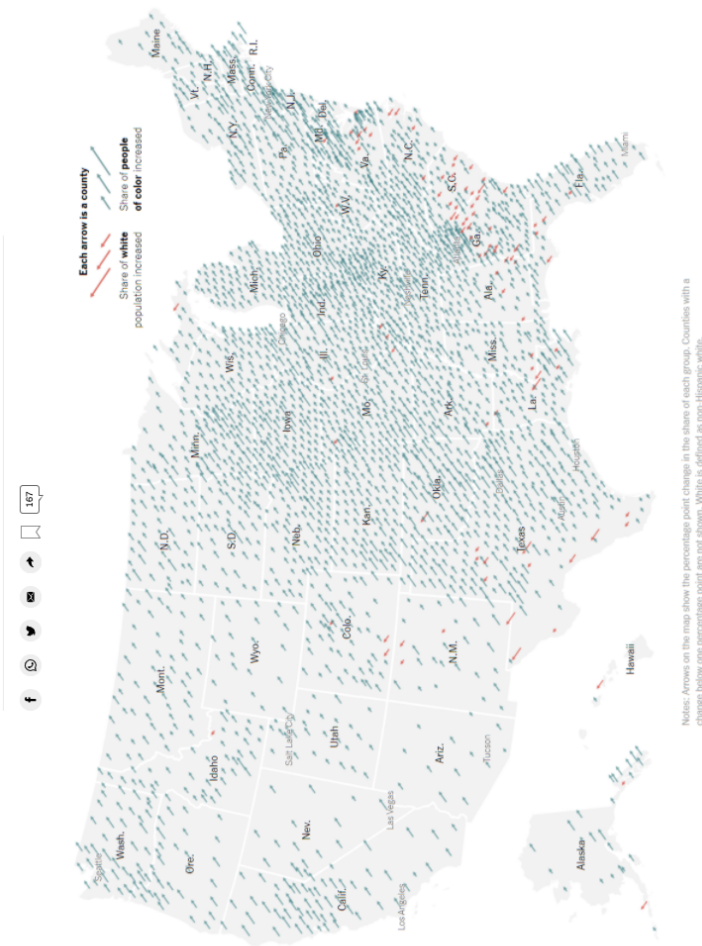
1. What variables form the frame?
2. What glyphs (marks/geoms) are used?
3. What are the properties (aesthetics, channels) for those glyphs?
4. Which variables are mapped to which properties?
5. Which variables, if any, are used for faceting (small multiples)?
6. Which scales have a corresponding guide?
7. What would a row of the glyph-ready data used to create this plot look like? (Include variable names and (estimated) values.)
8. Do you think the raw data had a different format? If so, what would a row of the raw data look like?
9. What are the biggest strengths/weakness of this plot?
10. Are there any elements of this plot that don't fit into the "grammar of graphics"?

Source: <https://www.accesskent.com/Health/covid-19-data.htm>

## Population Diversity Shift

### Population Diversity Shift

How has the diversity of the population of the United States shifted from 2010 to 2020?

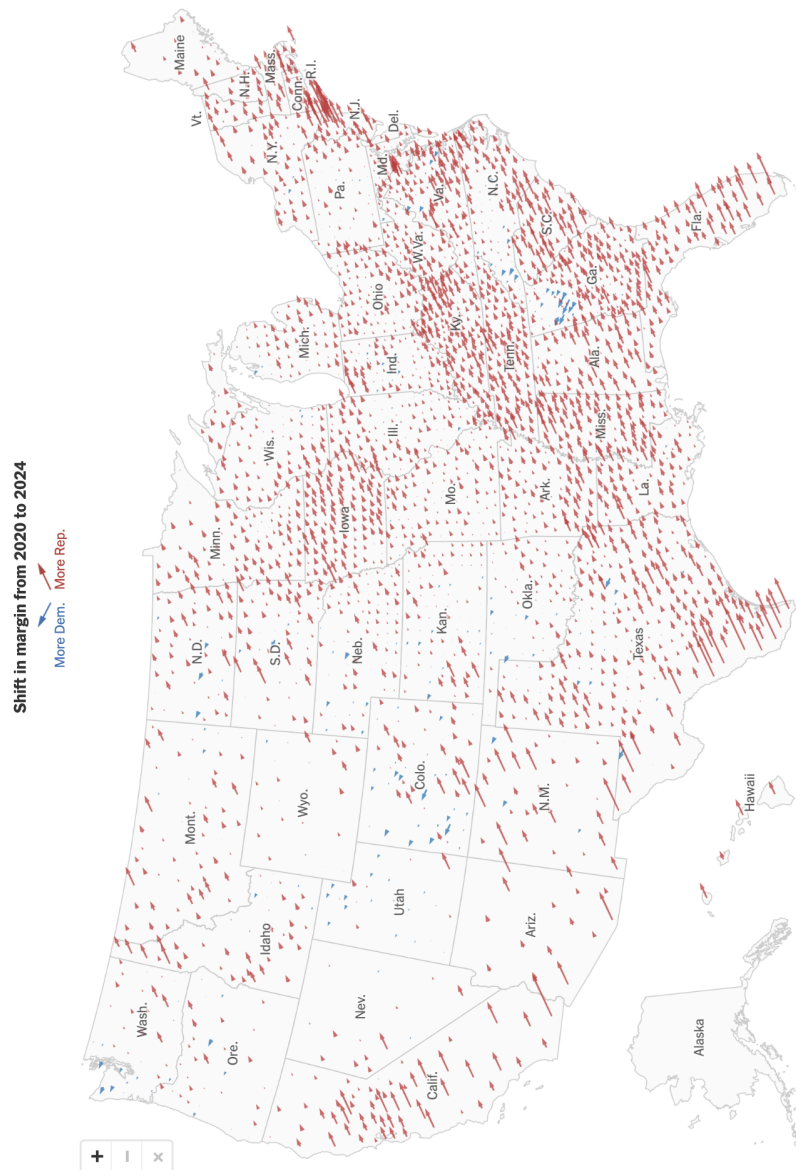


1. What variables form the frame?
2. What glyphs (marks/geoms) are used?
3. What are the properties (aesthetics, channels) for those glyphs?
4. Which variables are mapped to which properties?
5. Which variables, if any, are used for faceting (small multiples)?
6. Which scales have a corresponding guide?
7. What would a row of the glyph-ready data used to create this plot look like? (Include variable names and (estimated) values.)
8. Do you think the raw data had a different format? If so, what would a row of the raw data look like?
9. What are the biggest strengths/weakness of this plot?
10. Are there any elements of this plot that don't fit into the "grammar of graphics"?

Source: <https://www.nytimes.com/2022/01/13/learning/whats-going-on-in-this-graph-jan-19-2022.html>



## Presidential Red Shift

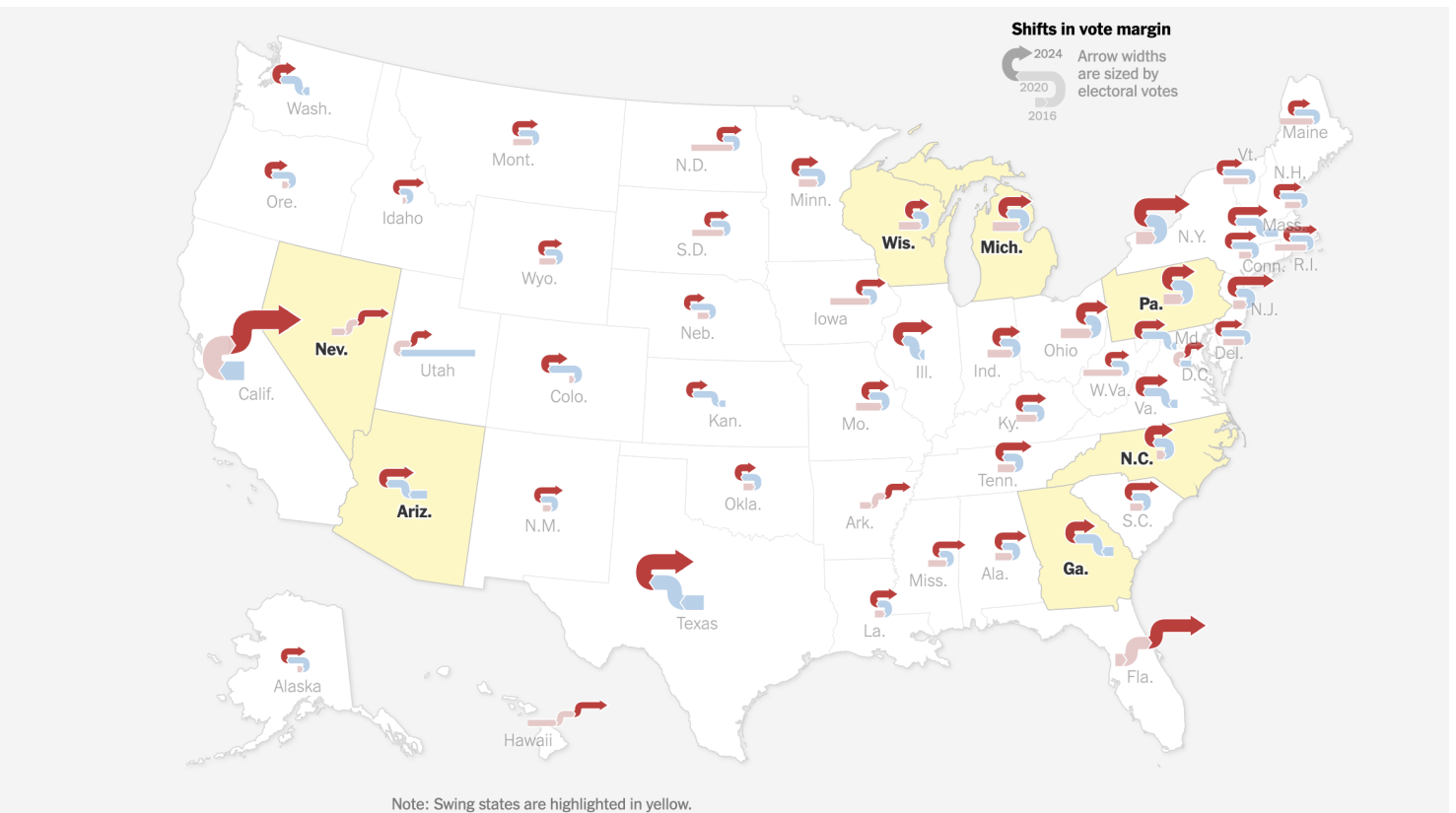


1. What variables form the frame?
2. What glyphs (marks/geoms) are used?
3. What are the properties (aesthetics, channels) for those glyphs?
4. Which variables are mapped to which properties?
5. Which variables, if any, are used for faceting (small multiples)?
6. Which scales have a corresponding guide?
7. What would a row of the glyph-ready data used to create this plot look like? (Include variable names and (estimated) values.)
8. Do you think the raw data had a different format? If so, what would a row of the raw data look like?
9. What are the biggest strengths/weakness of this plot?
10. Are there any elements of this plot that don't fit into the "grammar of graphics"?

Source: <https://www.nytimes.com/2022/01/13/learning/whats-going-on-in-this-graph-jan-19-2022.html>

See also: <https://www.nytimes.com/interactive/2025/us/elections/2024-election-map-precinct-results.html>

## Blue Shift, Red Shift

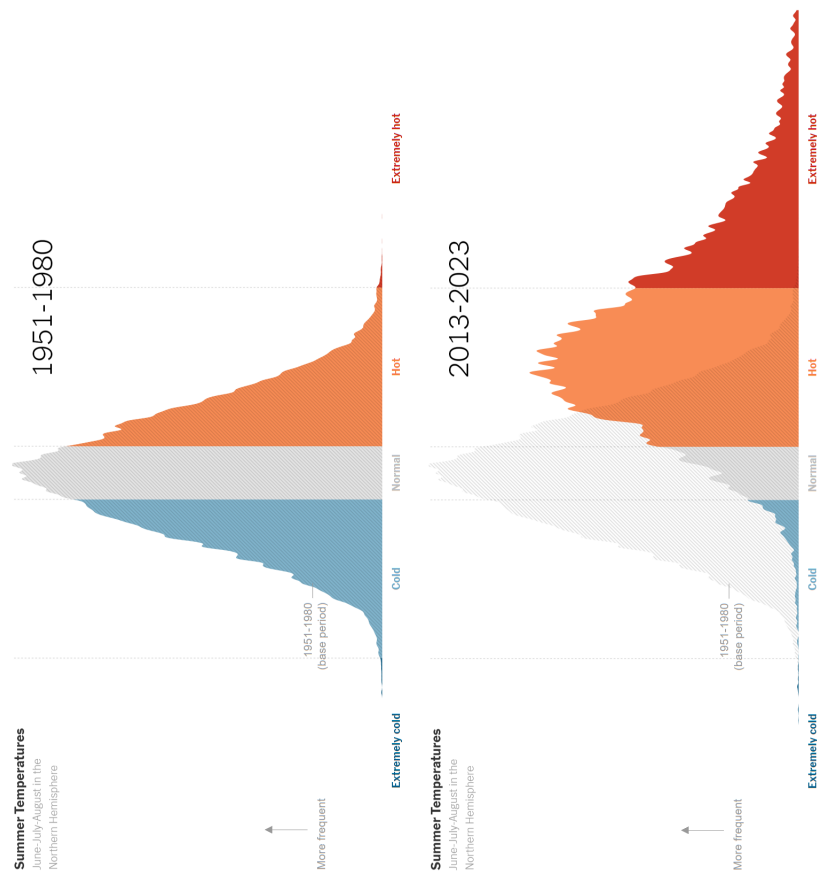


Source: <https://www.nytimes.com/interactive/2024/11/06/us/elections/trump-america-red-shift-victory.html>

1. What variables form the frame?
2. What glyphs (marks/geoms) are used?
3. What are the properties (aesthetics, channels) for those glyphs?
4. Which variables are mapped to which properties?
5. Which variables, if any, are used for faceting (small multiples)?
6. Which scales have a corresponding guide?
7. What would a row of the glyph-ready data used to create this plot look like? (Include variable names and (estimated) values.)
8. Do you think the raw data had a different format? If so, what would a row of the raw data look like?
9. What are the biggest strengths/weakness of this plot?
10. Are there any elements of this plot that don't fit into the "grammar of graphics"?



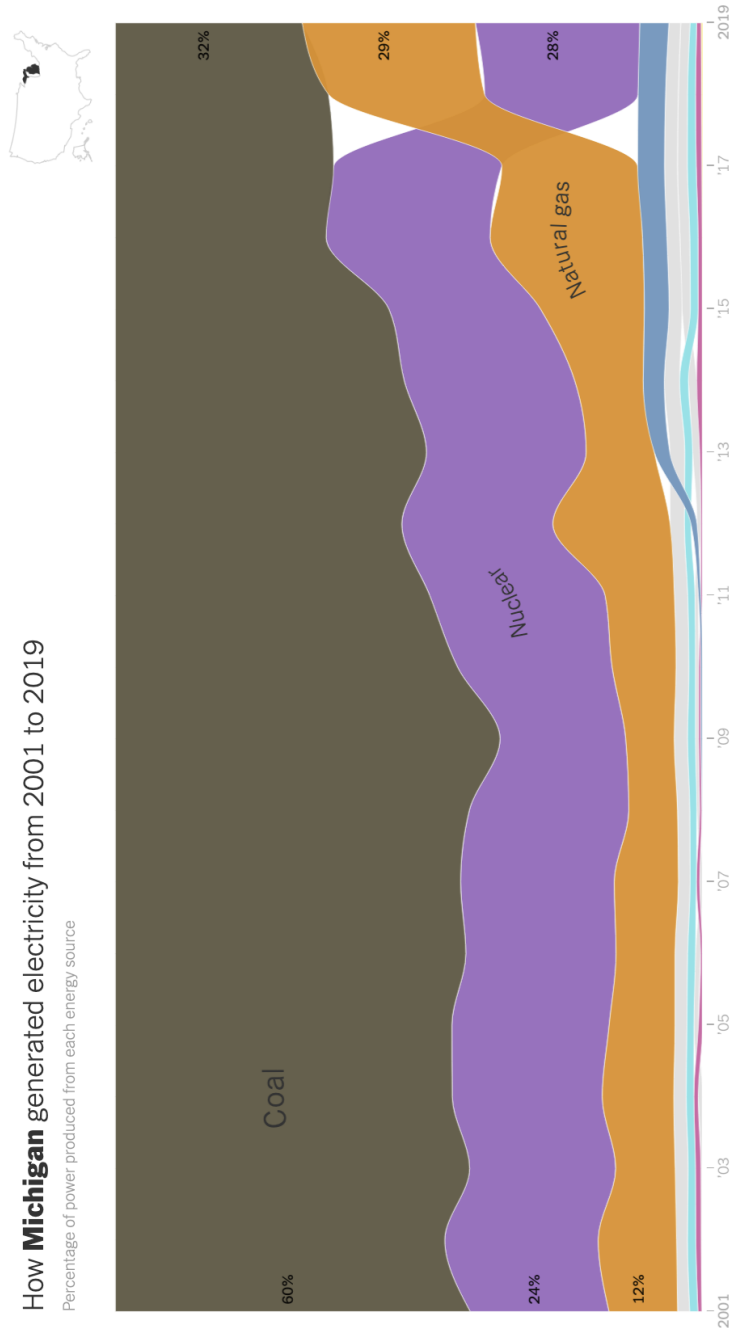
## Summer Temperatures



1. What variables form the frame?
2. What glyphs (marks/geoms) are used?
3. What are the properties (aesthetics, channels) for those glyphs?
4. Which variables are mapped to which properties?
5. Which variables, if any, are used for faceting (small multiples)?
6. Which scales have a corresponding guide?
7. What would a row of the glyph-ready data used to create this plot look like? (Include variable names and (estimated) values.)
8. Do you think the raw data had a different format? If so, what would a row of the raw data look like?
9. What are the biggest strengths/weakness of this plot?
10. Are there any elements of this plot that don't fit into the "grammar of graphics"?

Source: <https://www.nytimes.com/2024/05/02/learning/whats-going-on-in-this-graph-may-8-2024.html>

## Energy in Michigan



1. What variables form the frame?
2. What glyphs (marks/geoms) are used?
3. What are the properties (aesthetics, channels) for those glyphs?
4. Which variables are mapped to which properties?
5. Which variables, if any, are used for faceting (small multiples)?
6. Which scales have a corresponding guide?
7. What would a row of the glyph-ready data used to create this plot look like? (Include variable names and (estimated) values.)
8. Do you think the raw data had a different format? If so, what would a row of the raw data look like?
9. What are the biggest strengths/weakness of this plot?
10. Are there any elements of this plot that don't fit into the "grammar of graphics"?

Source: [https://www.nytimes.com/interactive/2024/08/02/climate/electricity-generation-us-states.html?unlocked\\_article\\_code=1.ik4.wcWk.5zUcawqL2WZz](https://www.nytimes.com/interactive/2024/08/02/climate/electricity-generation-us-states.html?unlocked_article_code=1.ik4.wcWk.5zUcawqL2WZz)

- Note: there are graphics like this for each state. Feel free to check out some other states.

## Snap Thrifty Food Plan

### SNAP 'Thrifty Food Plan'

The Agriculture Department has revised its model dietary plan illustrating how families could practically meet nutritional guidelines at a low cost. What do you notice and wonder?



Source: U.S. Department of Agriculture

By The Learning Network

Published Oct. 7, 2021 Updated Oct. 14, 2021

1. What variables form the frame?
2. What glyphs (marks/geoms) are used?
3. What are the properties (aesthetics, channels) for those glyphs?
4. Which variables are mapped to which properties?
5. Which variables, if any, are used for faceting (small multiples)?
6. Which scales have a corresponding guide?
7. What would a row of the glyph-ready data used to create this plot look like? (Include variable names and (estimated) values.)
8. Do you think the raw data had a different format? If so, what would a row of the raw data look like?
9. What are the biggest strengths/weakness of this plot?
10. Are there any elements of this plot that don't fit into the "grammar of graphics"?

Source: <https://www.nytimes.com/2021/10/07/learning/whats-going-on-in-this-graph-oct-13-2021.html>

## Carbon Emissions

### Global Carbon Emissions

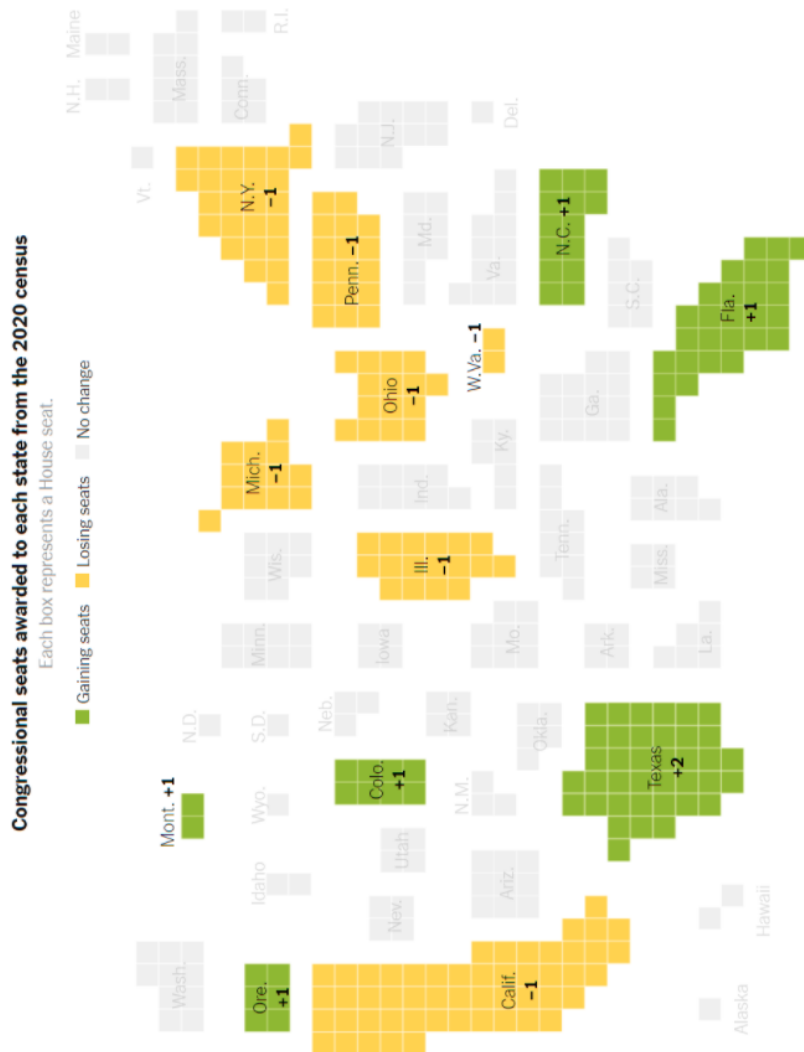
Compare the historical share of global carbon emissions — both total emissions and emissions per person — for the world's 23 richest countries to the share from all of the world's other countries.



1. What variables form the frame?
2. What glyphs (marks/geoms) are used?
3. What are the properties (aesthetics, channels) for those glyphs?
4. Which variables are mapped to which properties?
5. Which variables, if any, are used for faceting (small multiples)?
6. Which scales have a corresponding guide?
7. What would a row of the glyph-ready data used to create this plot look like? (Include variable names and (estimated) values.)
8. Do you think the raw data had a different format? If so, what would a row of the raw data look like?
9. What are the biggest strengths/weakness of this plot?
10. Are there any elements of this plot that don't fit into the "grammar of graphics"?

Source: <https://www.nytimes.com/2021/11/18/learning/whats-going-on-in-this-graph-dec-1-2021.html>

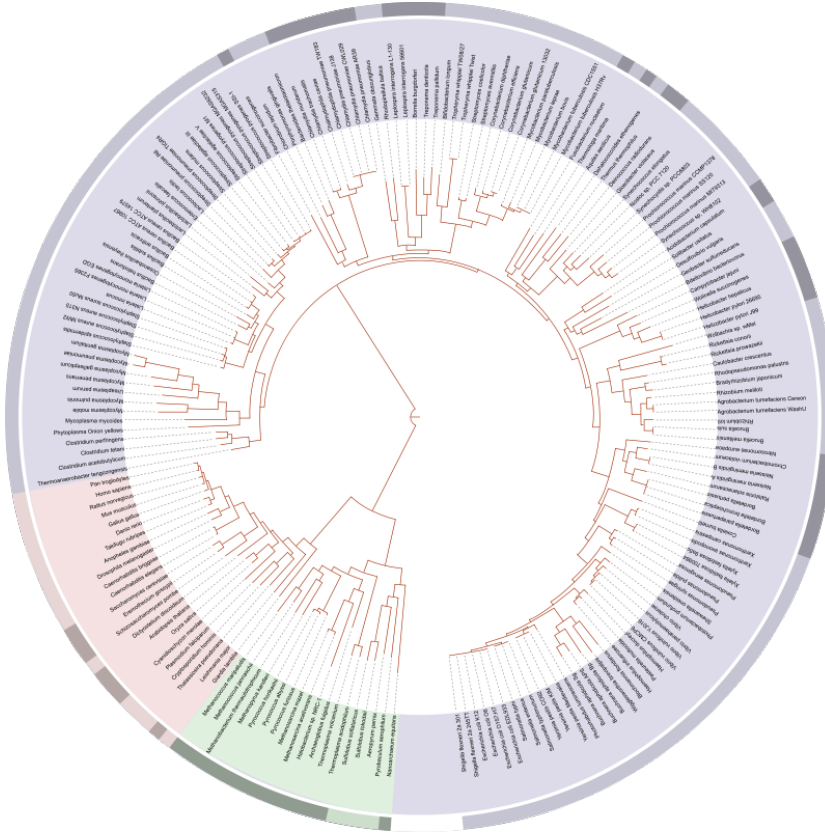
## Congressional Seats



1. What variables form the frame?
2. What glyphs (marks/geoms) are used?
3. What are the properties (aesthetics, channels) for those glyphs?
4. Which variables are mapped to which properties?
5. Which variables, if any, are used for faceting (small multiples)?
6. Which scales have a corresponding guide?
7. What would a row of the glyph-ready data used to create this plot look like? (Include variable names and (estimated) values.)
8. Do you think the raw data had a different format? If so, what would a row of the raw data look like?
9. What are the biggest strengths/weakness of this plot?
10. Are there any elements of this plot that don't fit into the "grammar of graphics"?

Source: <https://www.nytimes.com/2021/10/21/learning/whats-going-on-in-this-graph-oct-27-2021.html>

## Tree of Life



1. What variables form the frame?
2. What glyphs (marks/geoms) are used?
3. What are the properties (aesthetics, channels) for those glyphs?
4. Which variables are mapped to which properties?
5. Which variables, if any, are used for faceting (small multiples)?
6. Which scales have a corresponding guide?
7. What would a row of the glyph-ready data used to create this plot look like? (Include variable names and (estimated) values.)
8. Do you think the raw data had a different format? If so, what would a row of the raw data look like?
9. What are the biggest strengths/weakness of this plot?
10. Are there any elements of this plot that don't fit into the "grammar of graphics"?

Source:

- [https://en.wikipedia.org/wiki/Phylogenetic\\_tree](https://en.wikipedia.org/wiki/Phylogenetic_tree)
- [https://en.wikipedia.org/wiki/Tree\\_of\\_life\\_\(biology\)](https://en.wikipedia.org/wiki/Tree_of_life_(biology))